

The background of the cover is a detailed landscape painting. It depicts a deep, rugged mountain valley. A river or stream flows from the upper center towards the bottom right, its surface reflecting the light from above. The mountainsides are steep and rocky, with some areas appearing to be covered in snow or light-colored rock. The sky is filled with dark, heavy clouds, but a brilliant, golden light source, possibly the sun or moon, is positioned in the upper center, casting a strong glow across the scene and creating a hazy, atmospheric effect. The overall color palette is dominated by blues, greys, and earthy tones, with the golden light providing a focal point of warmth.

OBSESSION

Bruno Robilliard

Obsession

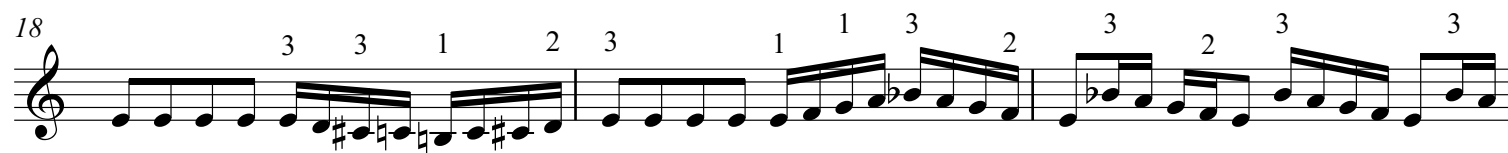
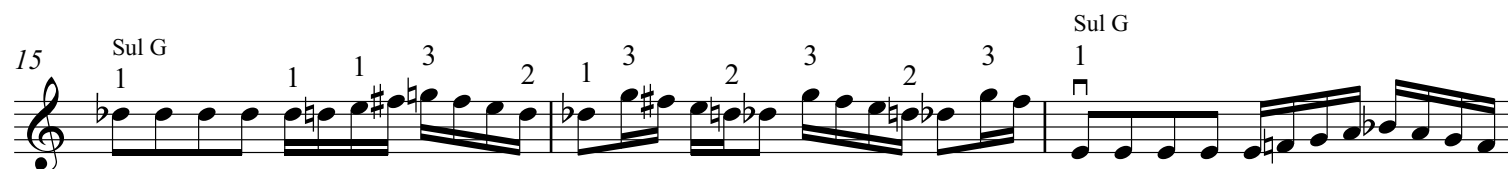
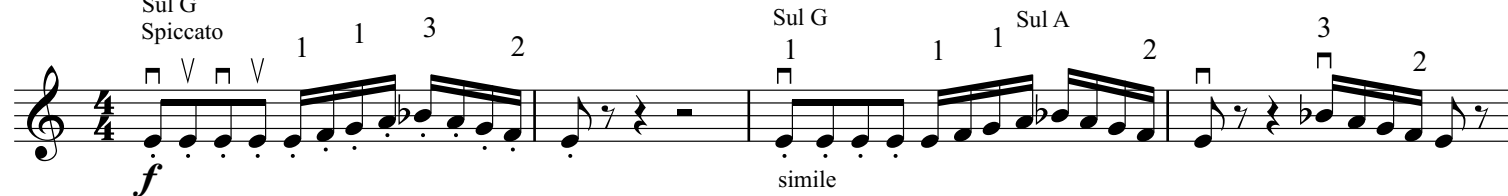
A ma soeur Virginie

Bruno Robilliard

Modéré et avec beaucoup de caractère ♩ = 80

Sul G

Spiccato



Lourd et violent
Spiccato

3

23 *f*

25 *mf* *Crescendo*

27 *f* *Sul G Marcato plus à la corde*

30 *f* *Sul G*

34

37 *A la corde* *Spiccato* *A la corde* *Spiccato*

40

43 *mf* *Crescendo*

4

45

Sul G
Toute force
Spiccato

Sul D

Staff 45-46: Treble clef, 4/4 time. Measures 45-46. Measure 45 has four chords, each with a 4-measure fingering (1, 2, 3, 4) above it. Measure 46 has a sequence of eighth notes with fingerings 1, 4, 1, 4, 2, 1, 3.

47

Sul G

A la corde

Staff 47-48: Treble clef, 4/4 time. Measure 47 has eighth notes with fingerings 4, 1, 1, 1, 4, 1, 4, 0. Measure 48 has eighth notes with fingerings 4, 2, 0, 4, 2.

49

Sul G
Détaché

Staff 49-50: Treble clef, 4/4 time. Measure 49 has eighth notes with fingerings 2, 4, 1, 0, 1, 3. Measure 50 has eighth notes with fingerings 1, 1, 2, 3, 3, 3, 3, 3, 3, 3, 1, 3.

51

f

Staff 51-52: Treble clef, 4/4 time. Measure 51 has eighth notes with fingerings 3, 3, 3, 3, 3, 3, 3, 3, 3, 3, 1, 3, 2, 3, 4. Measure 52 has eighth notes with fingerings 4, 3, 2, 1, 3.

53

Spiccato

Staff 53-54: Treble clef, 4/4 time. Measure 53 has eighth notes with fingerings 4, 2, 4, 2, 4, 4, 2, 4, 2, 4, 1, 3, 1, 3, 1, 4. Measure 54 has eighth notes with fingerings 1, 3, 1, 4.

57

Staff 57-58: Treble clef, 4/4 time. Measure 57 has eighth notes with fingerings 1, 3, 1, 3, 1, 3, 1, 3, 1, 3, 1, 3, 1, 3, 1, 3. Measure 58 has eighth notes with fingerings 1, 3, 1, 3, 1, 3, 1, 3, 1, 3, 1, 3, 1, 3, 1, 3.

60

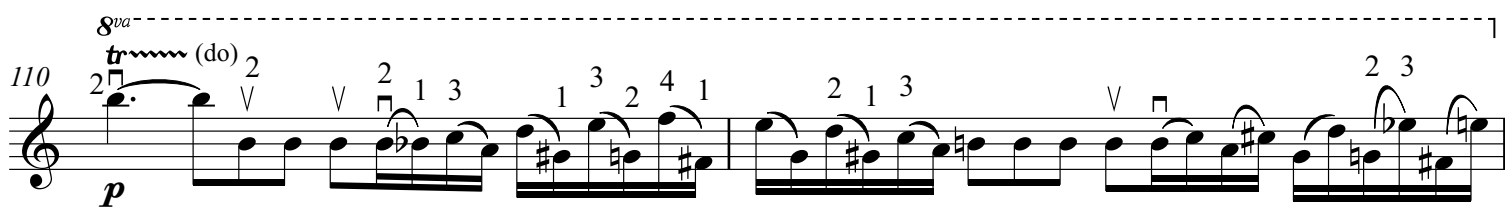
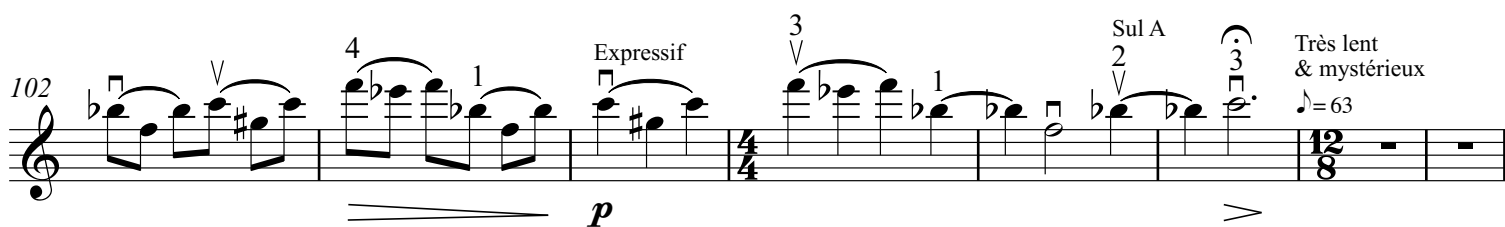
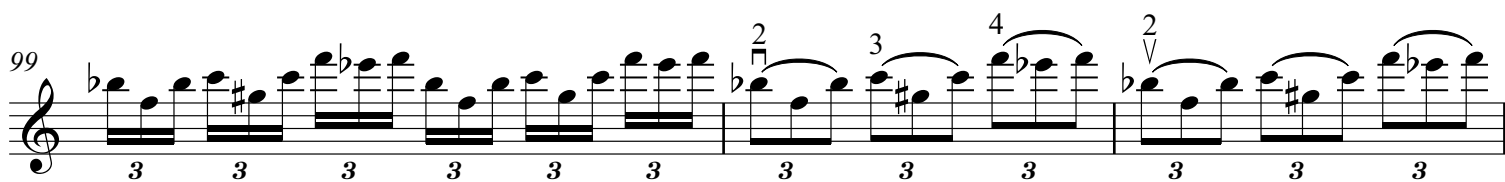
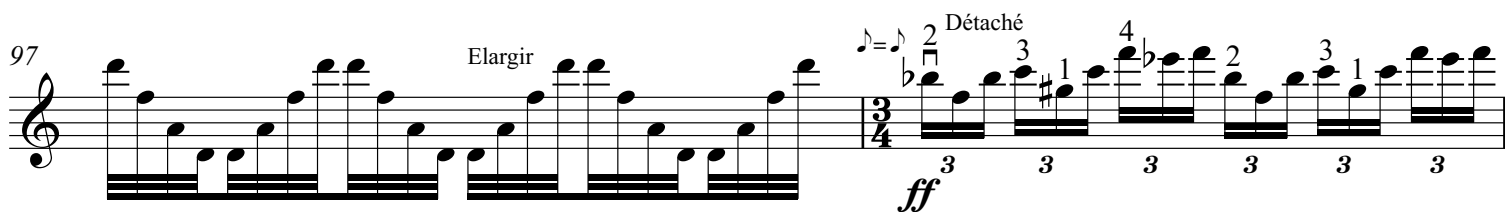
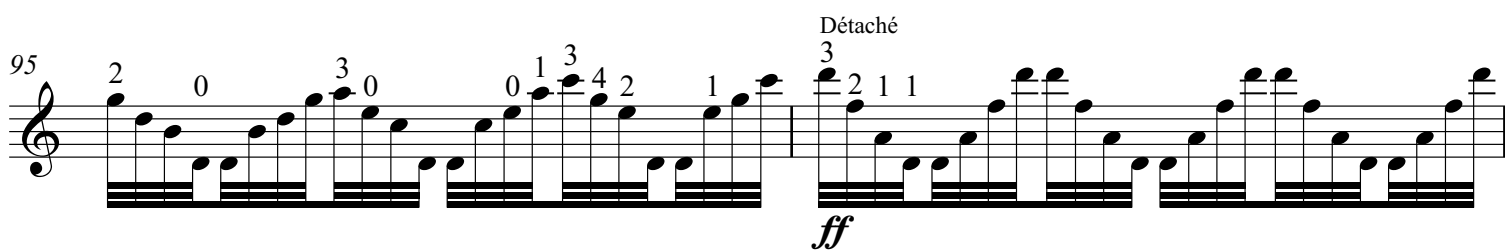
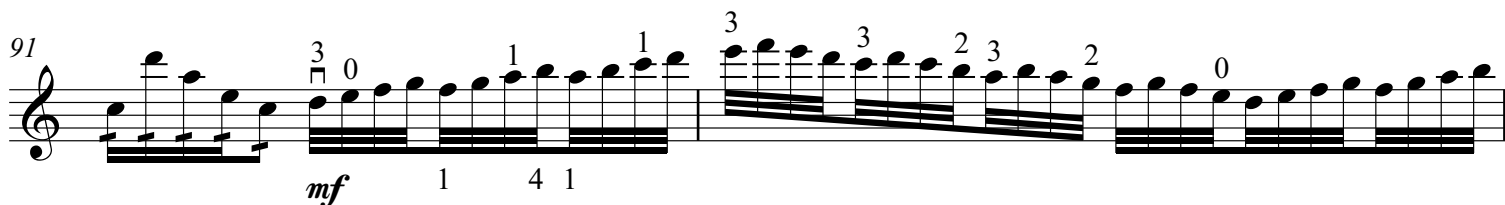
Sul G
Sautillé

Staff 60-61: Treble clef, 4/4 time. Measure 60 has eighth notes with fingerings 1, 3, 3, 3, 1, 3, 4, 1, 1, 3, 3, 1, 2, 3, 4. Measure 61 has eighth notes with fingerings 1, 3, 1, 3, 1, 3, 1, 3, 1, 3, 1, 3, 1, 3, 1, 3.

61

Sul G

Staff 61-62: Treble clef, 4/4 time. Measure 61 has eighth notes with fingerings 1, 2, 3, 2, 1, 3, 3, 1, 2, 3, 1, 2, 3, 3, 3, 1, 4. Measure 62 has eighth notes with fingerings 1, 2, 3, 1, 2, 3, 3, 1, 4.



Un peu en dessous du tempo précédent

124

p Cresc. poco a poco

156 *Sul E Spiccato*

mf 2

159

f

162

165 *Sul ponticello*

ff *f*

168 *Sul G*

171 *Sul G*

ff

174

fff

179 *5ème Position*

p *Cresc.*

181 *fff*

185 *p* *Cresc.* *f*

187 *p*

189 *mf*

191 *Scandé et marcato* *Cresc.*

195 *Forte*

197

199

203 *p*

205 *mf*

207 *f* *Cresc.*

211 *Forte*

213

215

219

223 *mf* *Cresc.*

226 *f* *Cresc.* *rall.*

228 *fff*

230 *ff*

233 *f* *Expressif* *rall.* *Sul A*

238 *p* *Cadence Pizz.* *5ème position*

241 *mf*

244 *5ème position*

247 *f* *Marcato Arco*

250 Sul A 2 Sul E 2 Sul E 2 Sul E 2

253 Marcato *ff* Sul E

256 *ff*

259

262 Large *Forte*

266 *rall.* Sul D. Spiccato Plus rapide *p*

269

271 *mp*

